



# PARTS MANUAL



## Models

Mfg. No.	Description
881560	MXMU19675E, 675 Series 19" Self Propelled Mower, CE (2012)

Manual Part No. 1754200

Revision -

Rev. Date: 12/14/2011

Not for  
Reproduction

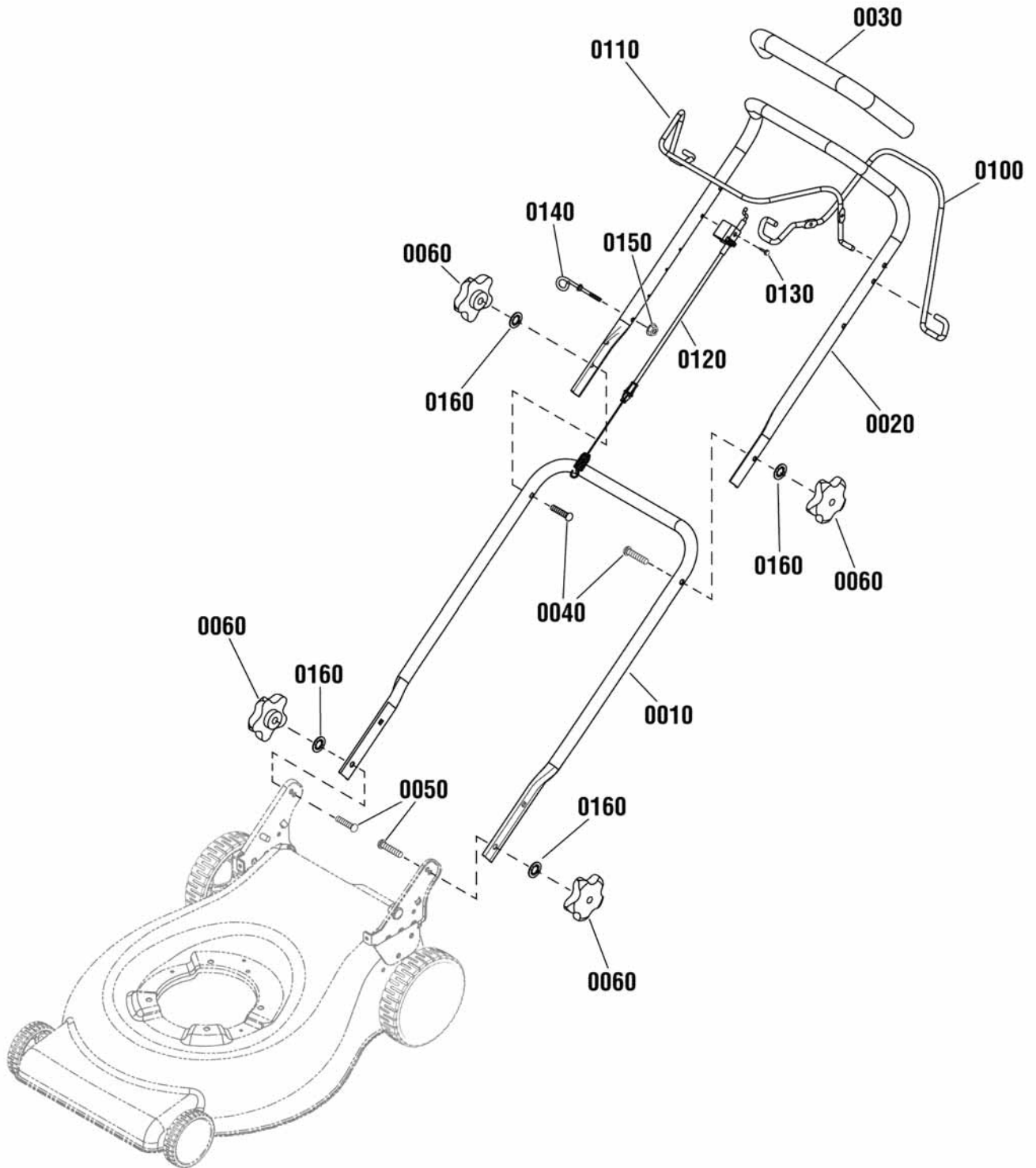
<b>PRODUCT COMPONENTS</b>	<b>PAGES</b>
Handles Group .....	4
Engine Group .....	6
Wheels Group - Standard Wheel .....	8
Decals Group .....	10
Blade Group .....	12
Deck Group .....	14
Height of Cut Group .....	16
<b>Torque Specification Chart .....</b>	<b>Inside Back Cover</b>

Not for  
Reproduction

## Handles Group

881308

NOTE: Unless noted otherwise,  
use the standard hardware torque  
specification chart.



The above parts group applies to the following Mfg. Nos.:

881560 - MXMU19675E

## Handles Group

REF NO	PART NO.	QTY.	DESCRIPTION
0010	880571AYP	1	HANDLE, Lower
0020	880210AYP	1	HANDLE, Upper
0030	880591YP	1	TUBING, Foam
0040	7091714YP	2	BOLT, Carriage, Short Neck, 5/16-18 x 1, GR5
0050	7091189YP	2	BOLT, Carriage, Curved Head, 5/16-18 x 2
0060	881518YP	4	KNOB, Handle, Red
0100	881061AYP	1	LEVER, Drive
0110	880476ZYP	1	LEVER, Stop
0120	880297YP	1	CABLE, Drive
0130	880498YP	1	SCREW, Hex Washer Head, Self Tap, #10-16 x 1-1/4
0140	7028488MA	1	GUIDE, Rope
0150	880561YP	1	NUT, Nylock, 1/4-20
0160	7090391SM	4	WASHER, Internal Tooth, 5/16

Not for  
Reproduction

## Footnotes

---

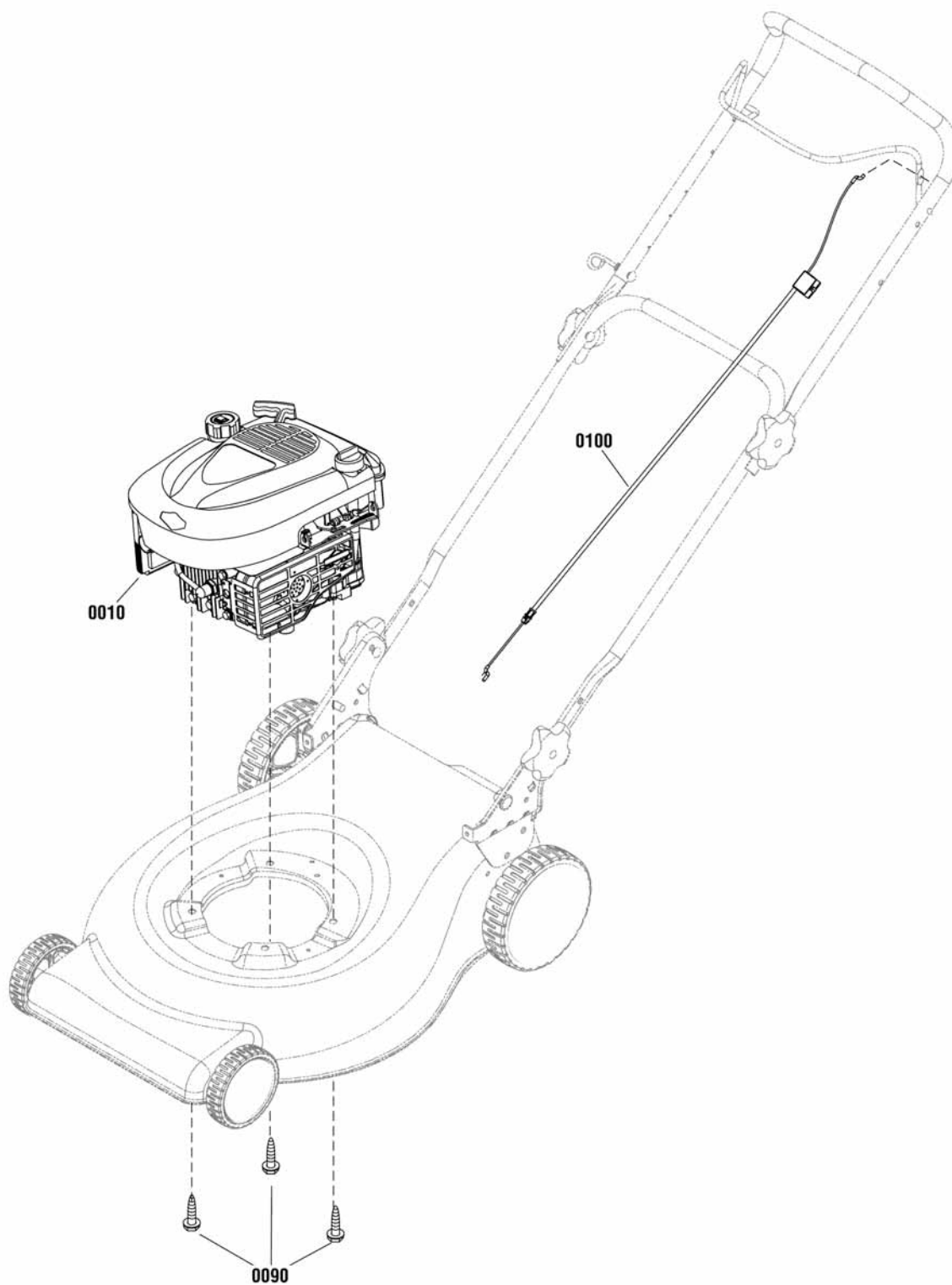
**The above parts group applies to the following Mfg. Nos.:**

881560 - MXMU19675E

## Engine Group

881293

NOTE: Unless noted otherwise,  
use the standard hardware torque  
specification chart.



The above parts group applies to the following Mfg. Nos.:

881560 - MXMU19675E

## **Engine Group**

---

<b>REF NO</b>	<b>PART NO.</b>	<b>QTY.</b>	<b>DESCRIPTION</b>
0010	126T02-6276-H1	1	* ENGINE, Briggs & Stratton 675 Series (Engine Model: 126T02-6276-H1)
0090	7090324SM	3	SCREW, Hex Washer Head, Self Tap, 3/8-16 x 1
0100	880639YP	1	CABLE, Engine Stop

---

Not for  
Reproduction

### **Footnotes**

Note\* To verify your specific engine model, please reference the ID Tag located on your engine. See your local Briggs & Stratton distributor for parts and service.

---

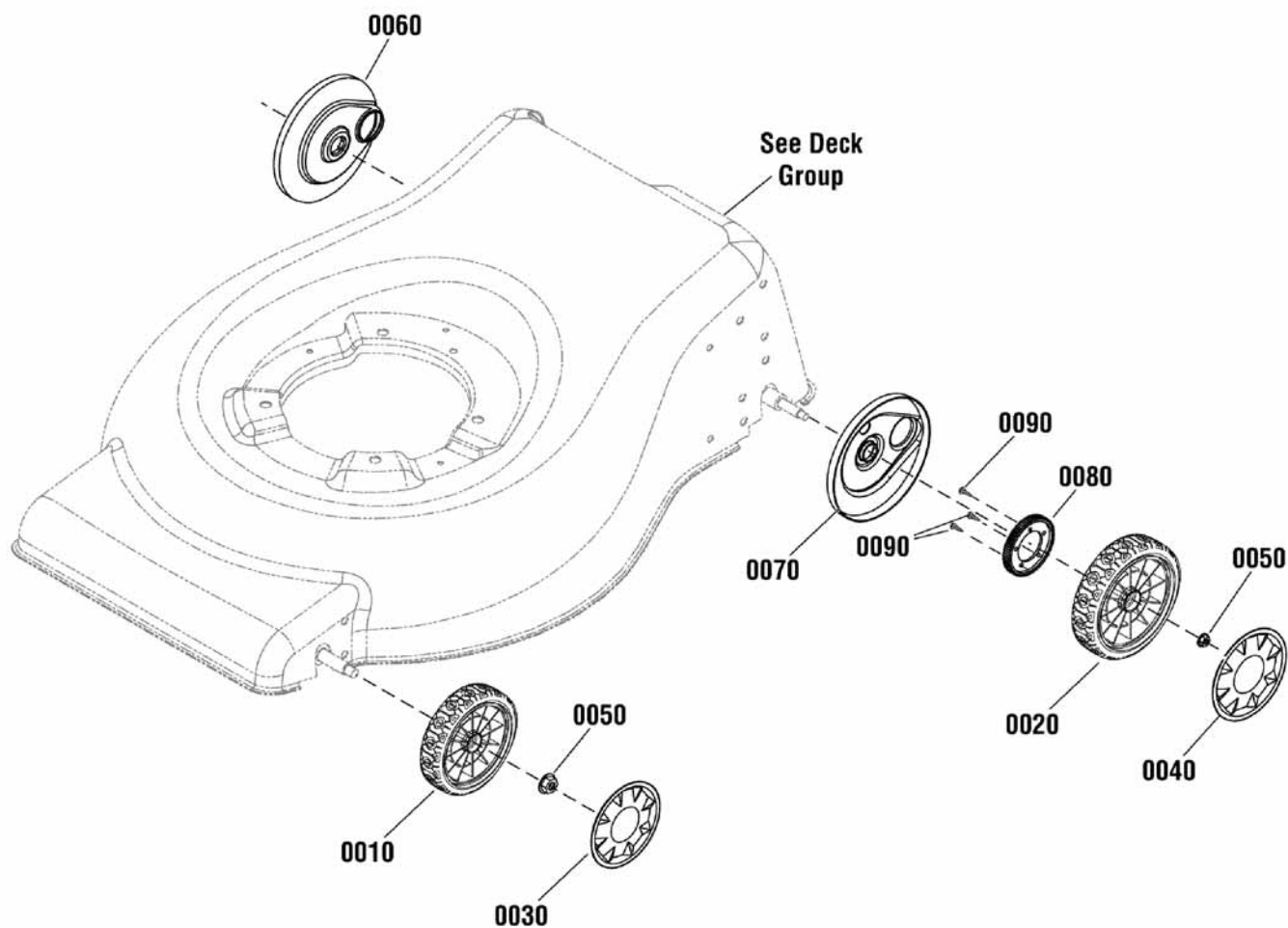
**The above parts group applies to the following Mfg. Nos.:**

881560 - MXMU19675E

## Wheels Group - Standard Wheel

881339

NOTE: Unless noted otherwise,  
use the standard hardware torque  
specification chart.



The above parts group applies to the following Mfg. Nos.:

881560 - MXMU19675E



## **Wheels Group - Standard Wheel**

<b>REF NO</b>	<b>PART NO.</b>	<b>QTY.</b>	<b>DESCRIPTION</b>
0010	880703YP	2	WHEEL ASSEMBLY, Front, 175mm
0020	880194YP	2	WHEEL ASSEMBLY, Rear, 200mm
0030	880698YP	2	HUBCAP, Front
0040	880699YP	2	HUBCAP, Rear
0050	015X84MA	4	NUT, Hex Flange, Center Lock, 3/8-16
0060	880230YP	1	COVER, Dust, RH
0070	880640YP	1	COVER, Dust, LH
0080	880225YP	2	GEAR, Wheel
0090	26X296MA	6	SCREW, Hex Head, Hi-Lo, 1/4-15 x 3/4

Not for  
Reproduction

### **Footnotes**

---

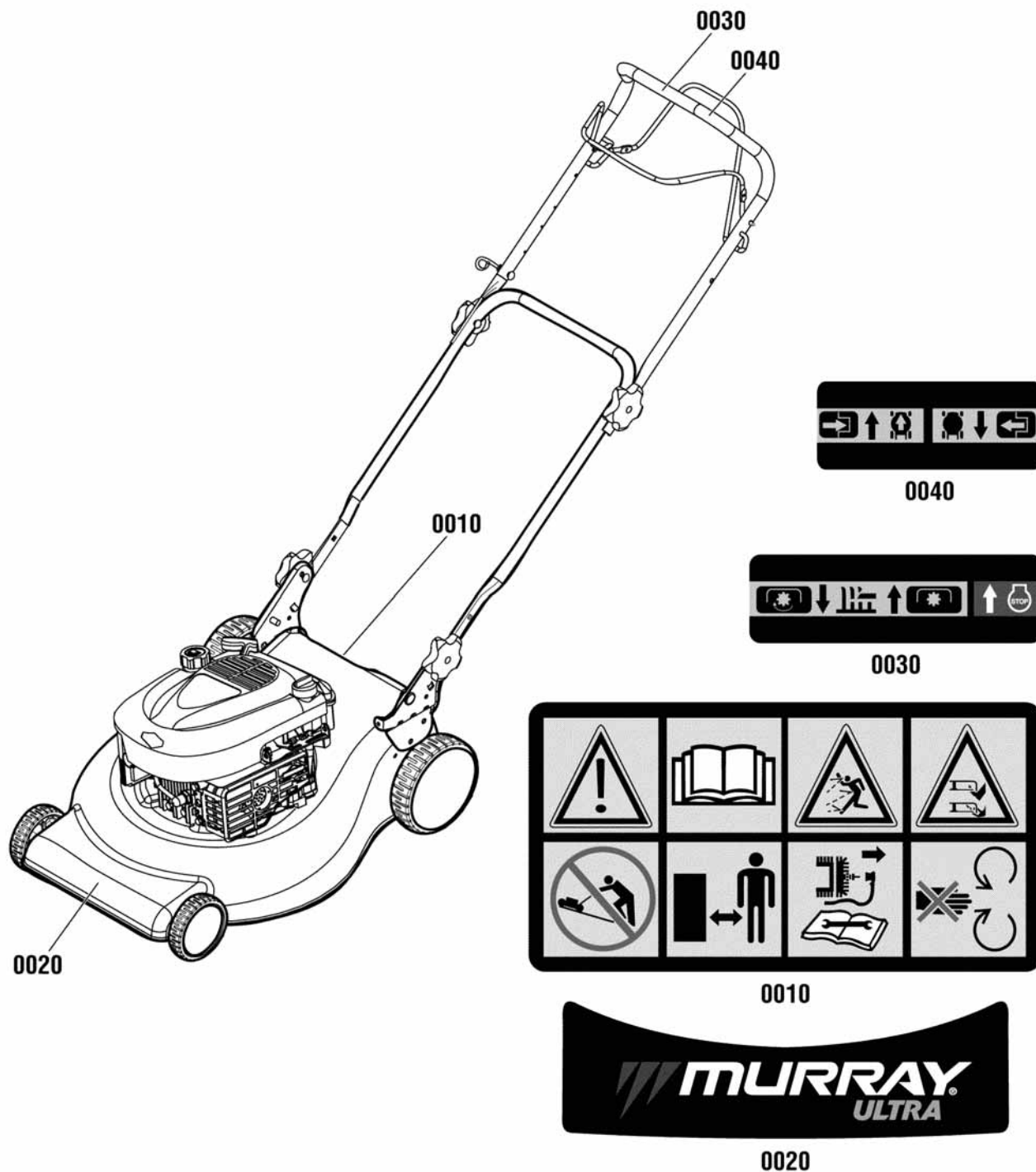
**The above parts group applies to the following Mfg. Nos.:**

881560 - MXMU19675E

## Decals Group

881653

NOTE: Unless noted otherwise,  
use the standard hardware torque  
specification chart.



The above parts group applies to the following Mfg. Nos.:  
881560 - MXMU19675E

## ***Decals Group***

---

<b>REF NO</b>	<b>PART NO.</b>	<b>QTY.</b>	<b>DESCRIPTION</b>
0010	880360YP	1	DECAL, Warning
0020	881260YP	1	DECAL, Logo, Deck
0030	880545YP	1	DECAL, Engine Lever
0040	880544YP	1	DECAL, Drive Lever

Not for  
Reproduction

### **Footnotes**

---

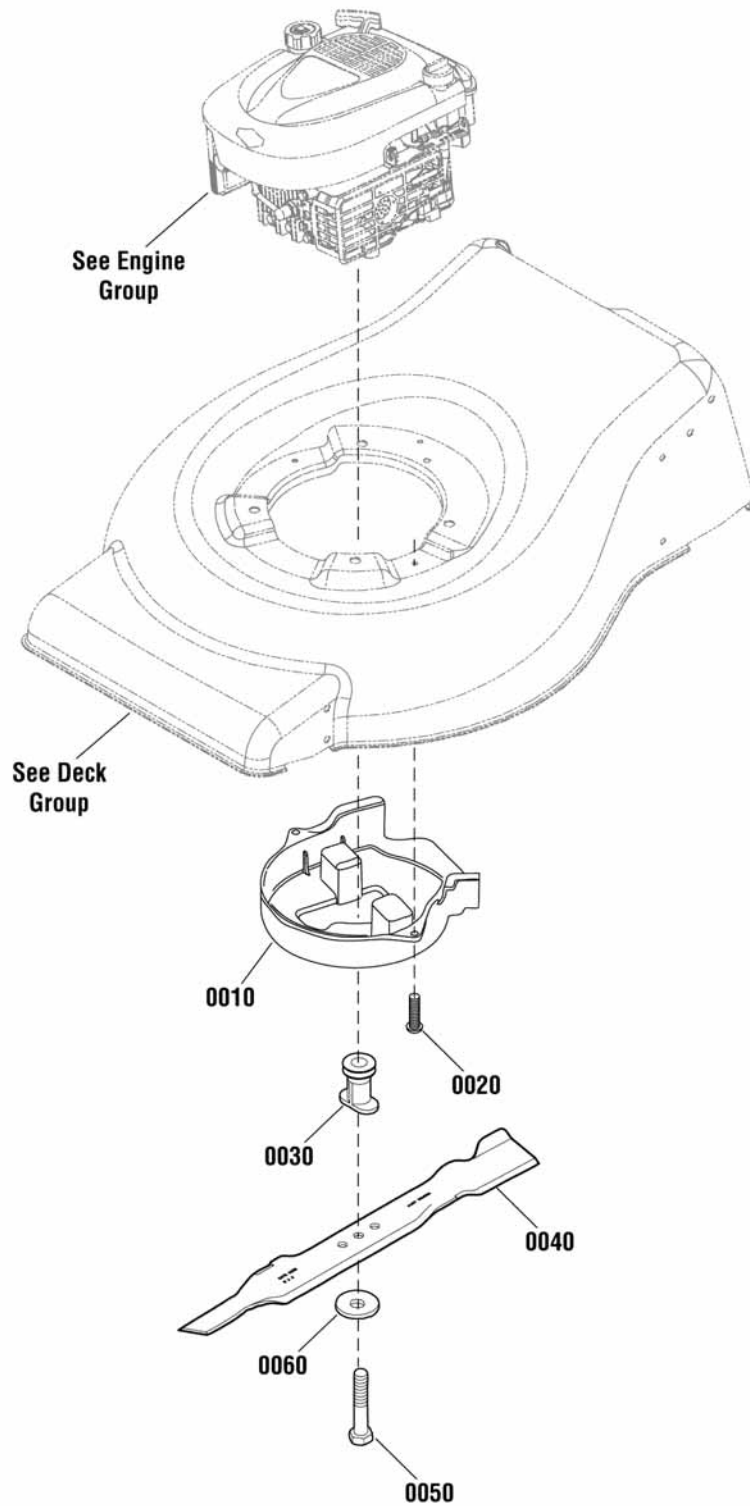
**The above parts group applies to the following Mfg. Nos.:**

881560 - MXMU19675E

## Blade Group

881282

NOTE: Unless noted otherwise,  
use the standard hardware torque  
specification chart.



The above parts group applies to the following Mfg. Nos.:

881560 - MXMU19675E

## **Blade Group**

---

<b>REF NO</b>	<b>PART NO.</b>	<b>QTY.</b>	<b>DESCRIPTION</b>
0010	880796YP	1	BELT GUIDE, Front
0020	880664YP	2	SCREW, Pan Head, Taptite, 1/4-20 x 1/2
0030	880567YP	1	BLADE ADAPTER
0040	880638BZYP	1	BLADE, Low Lift, 19"
0050	880034YP	1	CAPSCREW, Hex Head, 3/8-24 x 2
0060	1101989MA	1	WASHER, Belleville

Not for  
Reproduction

### **Footnotes**

---

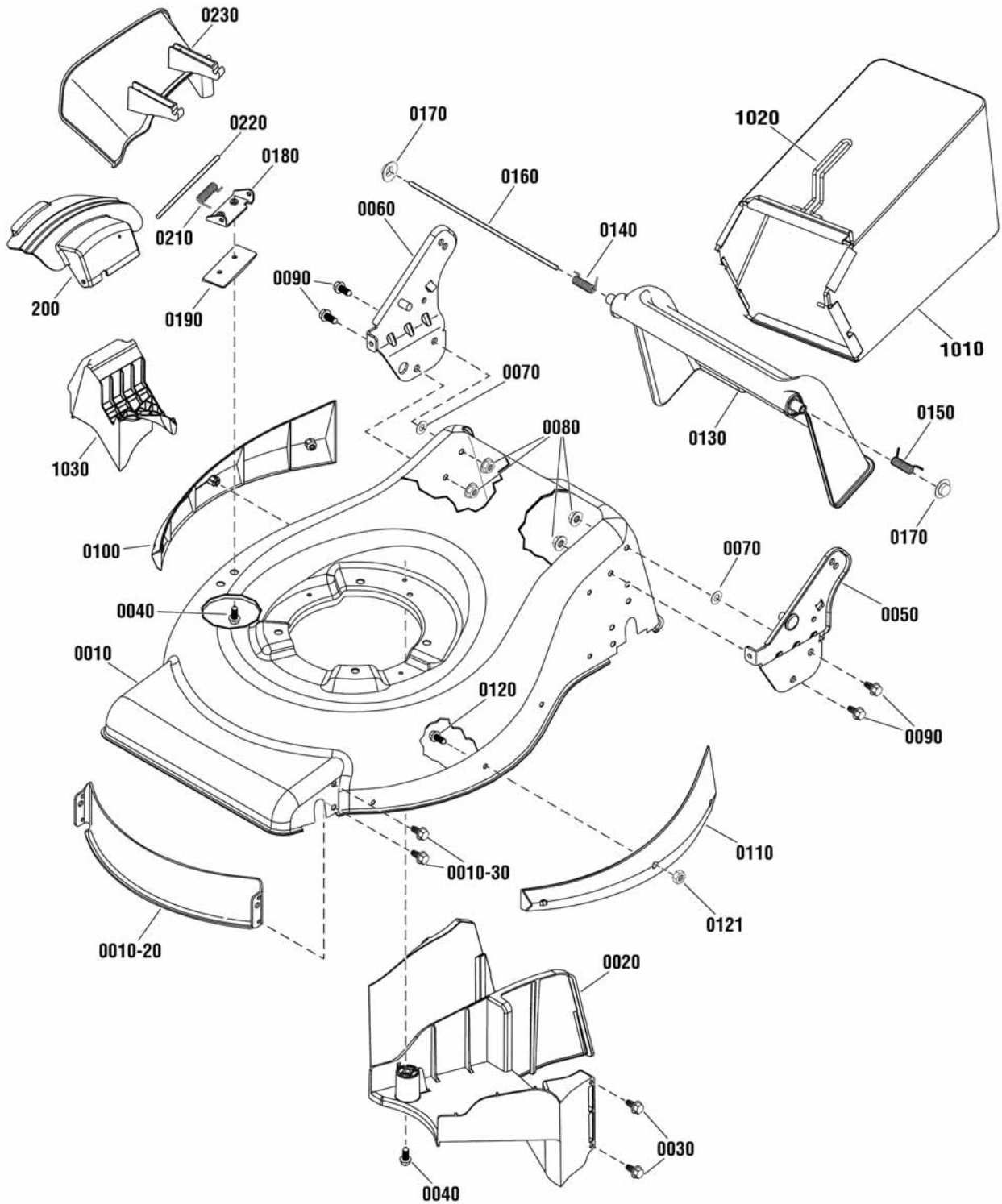
**The above parts group applies to the following Mfg. Nos.:**

881560 - MXMU19675E

## Deck Group

881335

NOTE: Unless noted otherwise,  
use the standard hardware torque  
specification chart.



The above parts group applies to the following Mfg. Nos.:

881560 - MXMU19675E

## Deck Group

REF NO	PART NO.	QTY.	DESCRIPTION
0010	881118BIYP	1	MOWER HOUSING, Rear/ Side Discharge
0010-20	880784YP	1	BAFFLE, Front, 19"
0010-30	880664YP	4	SCREW, Pan Head, Taptite, 1/4-20 x 1/2
0020	880785YP	1	BAFFLE, Rear
0030	880804YP	5	SCREW, Hi-Lo, 1/4 x 3/4
0040	880664YP	3	SCREW, Pan Head, Taptite, 1/4-20 x 1/2
0050	880951AYP	1	BRACKET, Handle, LH
0060	880950AYP	1	BRACKET, Handle, RH
0070	880607YP	2	WASHER, Flat, .34 ID x .69 OD
0080	1739305YP	4	NUT, Hex Flange, ESNA, 5/16-18
0090	880748YP	4	SCREW, Hex Washer, 5/16-18 x 1/2
0100	881112YP	1	GUARD, Side, RH
0110	881109YP	1	GUARD, Side, LH
0120	880339YP	6	SCREW, Torx Head, M5 x .8 x 14mm
0121	880428YP	6	NUT, Nylock, M5 X 0.8
0130	880671YP	1	DOOR, Rear
0140	880942YP	1	SPRING, Torsion, RH
0150	880943YP	1	SPRING, Torsion, LH
0160	880214YP	1	ROD, Rear Door
0170	7091020YP	2	NUT, Push, 1/4
0180	880584YP	1	BRACKET, Mulch Cover
0190	880583YP	1	SPACER, Mulch Cover
0200	880580YP	1	MULCH COVER
0210	880582YP	1	SPRING, Torsion, Mulch Cover
0220	880581YP	1	ROD, Mulch Cover
0230	880579YP	1	DEFLECTOR, Chute
1010	880965YP	1	BAG, 70L
1020	880963ZYP	1	FRAME, 70L
1030	880909YP	1	MULCH PLUG

## Footnotes

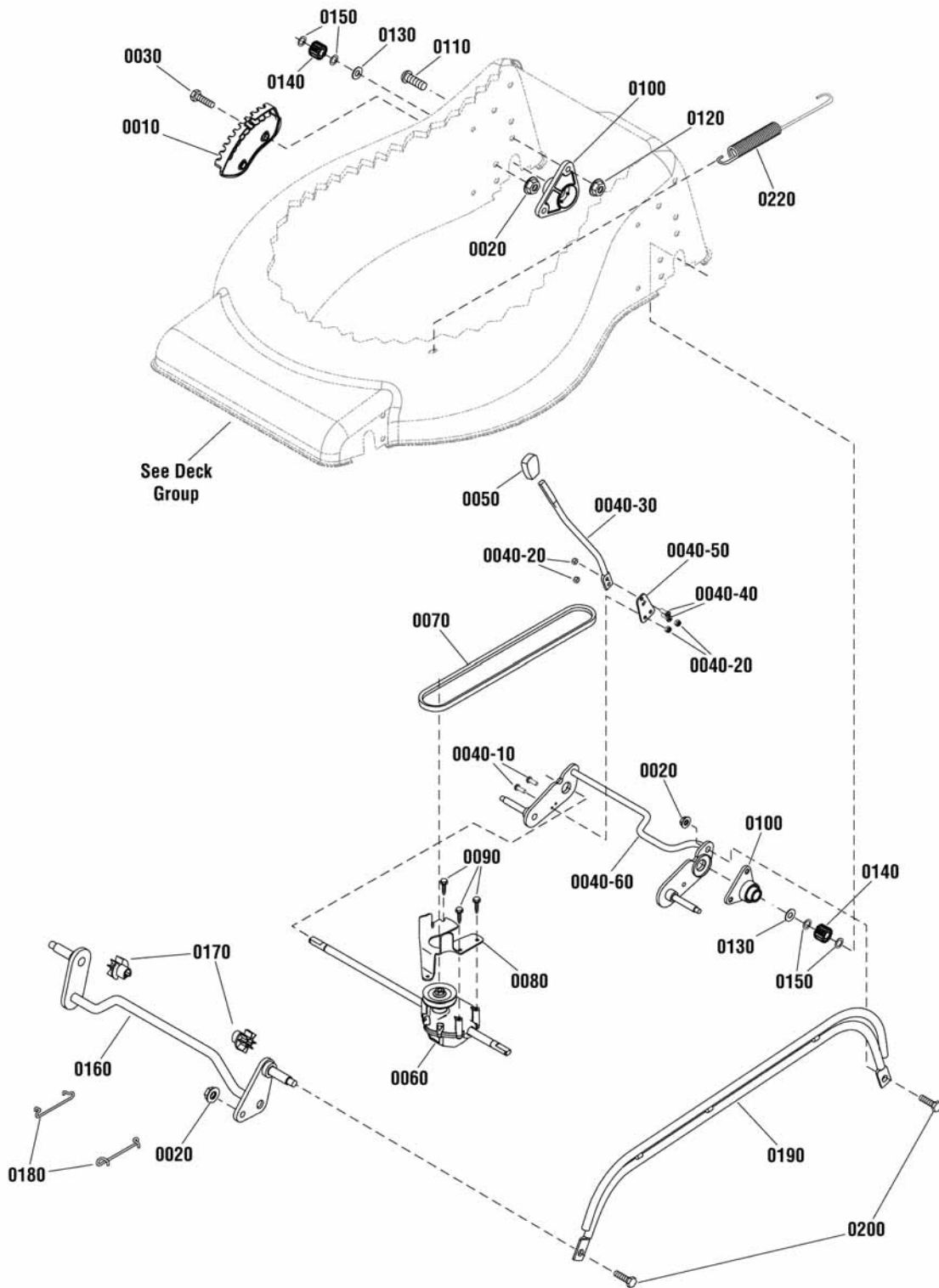
The above parts group applies to the following Mfg. Nos.:

881560 - MXMU19675E

## Height of Cut Group

881572

NOTE: Unless noted otherwise,  
use the standard hardware torque  
specification chart.



The above parts group applies to the following Mfg. Nos.:

881560 - MXMU19675E



## Height of Cut Group

REF NO	PART NO.	QTY.	DESCRIPTION
0010	880960YP	1	INDEX BRACKET, Standard Wheel
0020	1739305YP	4	NUT, Hex Flange, ESNA, 5/16-18
0030	22142GS	2	CAPSCREW, Hex Head, 5/16-18 x 3/4
0040-10	880339YP	2	SCREW, Torx Head
0040-20	880428YP	4	NUT, Nylock, M5 x 0.8
0040-30	880540YP	1	LEVER, Height Adjust
0040-40	880577YP	2	SCREW, Torx, M5 - 0.8 x 12.5
0040-50	880642YP	1	SPRING, Height Adjustment
0040-60	880829YP	1	CROSSBAR, Rear, Standard Wheel
0050	881059YP	1	KNOB, Adjuster, Red
0060	880341YP	1	TRANSMISSION, Standard Wheel
0070	880268YP	1	BELT, Drive
0080	880282YP	1	GUIDE, Belt
0090	880760YP	3	SCREW, Plastite, #10-14 x 7/8
0100	880787YP	2	RETAINER ASSEMBLY, Ball Bearing
0110	880845YP	4	SCREW, Torx Truss Head, 1/4-20 x 5/8
0120	880859YP	4	NUT, Flange Lock, 1/4-20
0130	880324YP	2	WASHER, Thrust
0140	880226YP	2	GEAR, Pinion, 11 Teeth, Standard Wheel
0150	880269YP	4	RING, Retaining
0160	880053YP	1	CROSSBAR ASSEMBLY, Front
0170	880050YP	2	BUSHING, Front
0180	881163YP	2	SPRING CLIP, Crossbar
0190	880791AYP	1	LIFTER LINK, Standard Wheel
0200	880651YP	2	BOLT, Shoulder, 5/16-18
0220	880052YP	1	SPRING, Extension

Not for  
Reproduction

## Footnotes

The above parts group applies to the following Mfg. Nos.:

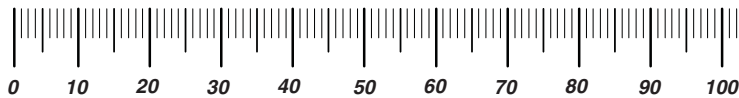
881560 - MXMU19675E

Not for  
Reproduction

# Hardware Identification & Torque Specifications

Torque Specification Chart								
FOR STANDARD METRIC MACHINE HARDWARE (Tolerance ± 20%)								
Property Class	5.6		8.8		10.9		12.9	
	Class 5.6		Class 8.8		Class 10.9		Class 12.9	
Size Of Hardware	in/lbs		in/lbs		in/lbs		in/lbs	
	ft/lbs	Nm.	ft/lbs	Nm.	ft/lbs	Nm.	ft/lbs	Nm.
M3	5.88	.56	13.44	1.28	19.2	1.80	22.92	2.15
M4	13.44	1.28	30.72	2.90	43.44	4.10	52.56	4.95
M5	26.4	2.50	60.96	5.75	5.97	8.10	7.15	9.7
M6	44.64	4.3	7.3	9.9	10.3	14	12.1	16.5
M7	5.2	7.1	12.1	16.5	16.9	23	19.9	27
M8	7.7	10.5	17.7	24	25	34	29	40
M10	15	21	35	48	50	67	59	81
M12	26	36	61	83	86.2	117	103	140
M14	42	58	101	132	136	185	162	220
M16	64	88	147	200	210	285	250	340
M18	89	121	202	275	287	390	346	470
M20	126	171	290	390	405	550	486	660
M22	169	230	390	530	559	745	656	890
M24	217	295	497	375	708	960	840	1140
M27	320	435	733	995	1032	1400	1239	1680
M30	435	590	995	1350	1401	1900	1681	2280
M33	590	800	1349	1830	1902	2580	2278	3090
M36	759	1030	1740	2360	2441	3310	2935	3980
M39	988	1340	2249	3050	3163	4290	3798	5150

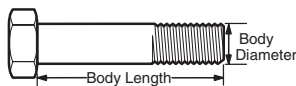
The guides and ruler furnished below are designed to help you select the appropriate hardware.



**Nut, M8**

Thread Diameter (mm)  
Inside Diameter (in) Threads per inch

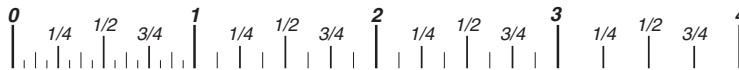
**Nut, 1/2-16**



**Screw, M8- 1.25 x 25**

Thread Diameter (mm) Distance between threads (mm) Body Length (mm)  
Body Diameter Threads per inch Body Length (in)

**Screw, 1/2- 16 x 2**



## Standard Hardware Sizing

When a washer or nut is identified as **1/2"** (M8), this is the *Nominal size*, meaning the *inside diameter* is 1/2 inch (8mm metric thread diameter); if a second number is present it represents the *threads per inch* (distance between threads).

When bolt or capscrew is identified as **1/2 - 16 x 2"** (M8 - 1.25 x 50 ), this means the *Nominal size*, or body diameter is 1/2 inch (8mm metric thread diameter), the second number, 16, represents the *threads per inch*, (*1.25 thread diameter*). The final number is the body length of the bolt or screw, 2 inches (50mm).

Torque Specification Chart						
FOR STANDARD MACHINE HARDWARE (Tolerance ± 20%)						
Hardware Grade	No Marks		SAE Grade 5		SAE Grade 8	
	SAE Grade 2		SAE Grade 5		SAE Grade 8	
Size Of Hardware	in/lbs		in/lbs		in/lbs	
	ft/lbs	Nm.	ft/lbs	Nm.	ft/lbs	Nm.
8-32	19	2.1	30	3.4	41	4.6
8-36	20	2.3	31	3.5	43	4.9
10-24	27	3.1	43	4.9	60	6.8
10-32	31	3.5	49	5.5	68	7.7
1/4-20	66	7.6	8	10.9	12	16.3
1/4-28	76	8.6	10	13.6	14	19.0
5/16-18	11	15.0	17	23.1	25	34.0
5/16-24	12	16.3	19	25.8	29	34.0
3/8-16	20	27.2	30	40.8	45	61.2
3/8-24	23	31.3	35	47.6	50	68.0
7/16-14	30	40.8	50	68.0	70	95.2
7/16-20	35	47.6	55	74.8	80	108.8
1/2-13	50	68.0	75	102.0	110	149.6
1/2-20	55	74.8	90	122.4	120	163.2
9/16-12	65	88.4	110	149.6	150	204.0
9/16-18	75	102.0	120	163.2	170	231.2
5/8-11	90	122.4	150	204.0	220	299.2
5/8-18	100	136	180	244.8	240	326.4
3/4-10	160	217.6	260	353.6	386	525.0
3/4-16	180	244.8	300	408.0	420	571.2
7/8-9	140	190.4	400	544.0	600	816.0
7/8-14	155	210.8	440	598.4	660	897.6
1-8	220	299.2	580	788.8	900	1,244.0
1-12	240	326.4	640	870.4	1,000	1,360.0

## NOTES

- These torque values are to be used for all hardware excluding: locknuts, self-tapping screws, thread forming screws, sheet metal screws and socket head setscrews.
- Recommended seating torque values for locknuts:
  - for prevailing torque locknuts - use 65% of grade 5 torques.
  - for flange whizlock nuts and screws - use 135% of grade 5 torques.
- Unless otherwise noted on assembly drawings, all torque values must meet this specification.

## Common Hardware Types

Hex Head Capscrew



Washer



Lockwasher

Carriage Bolt



Hex Nut

## Wrench & Fastener Size Guide

1/4" Bolt or Nut Wrench—7/16"	5/16" Bolt or Nut Wrench—1/2"	3/8" Bolt or Nut Wrench—9/16"	7/16" Bolt or Nut Wrench (Bolt)—5/8" Wrench (Nut)—11/16"	1/2" Bolt or Nut Wrench—3/4"
M6 Bolt or Nut Wrench—10mm	M8 Bolt or Nut Wrench—13mm	M10 Bolt or Nut Wrench—17mm	M12 Bolt or Nut Wrench—19mm	M14 Bolt or Nut Wrench—22mm

Not for  
Reproduction

**IT IS THE POLICY OF BRIGGS & STRATTON CORP. TO IMPROVE ITS PRODUCTS  
WHENEVER IT IS POSSIBLE AND PRACTICAL TO DO SO. WE RESERVE THE RIGHT TO  
MAKE CHANGES OR ADD IMPROVEMENTS AT ANY TIME WITHOUT INCURRING ANY  
OBLIGATION TO MAKE SUCH CHANGES ON PRODUCTS.**

**Briggs & Stratton Power Products Group**

---

12301 W. Wirth Street  
Wauwatosa, WI, 53222 USA

[www.murray.com](http://www.murray.com)

© Copyright 2011 by Briggs & Stratton Corporation  
Milwaukee, WI, USA. All rights reserved